

AlphaCor keratoprosthesis

Category(ies): Cornea, External Disease

Contributor: [Jesse Vislisel, MD](#)

Photographer: Stephanie Karakas, CRA and Tracy Aly, CRA



The AlphaCor is a type of keratoprosthesis implant used for patients that are not candidates for traditional penetrating keratoplasty. In our practice at the University of Iowa, the Boston Keratoprosthesis (KPro) has now replaced the use of the AlphaCor. This patient developed a dense retroprosthetic membrane behind her AlphaCor keratoprosthesis, as visible in the first photograph. The latter photographs show the post-operative appearance after surgical removal of the membrane.

For more information on modern keratoplasty techniques, [read the related tutorial](#).

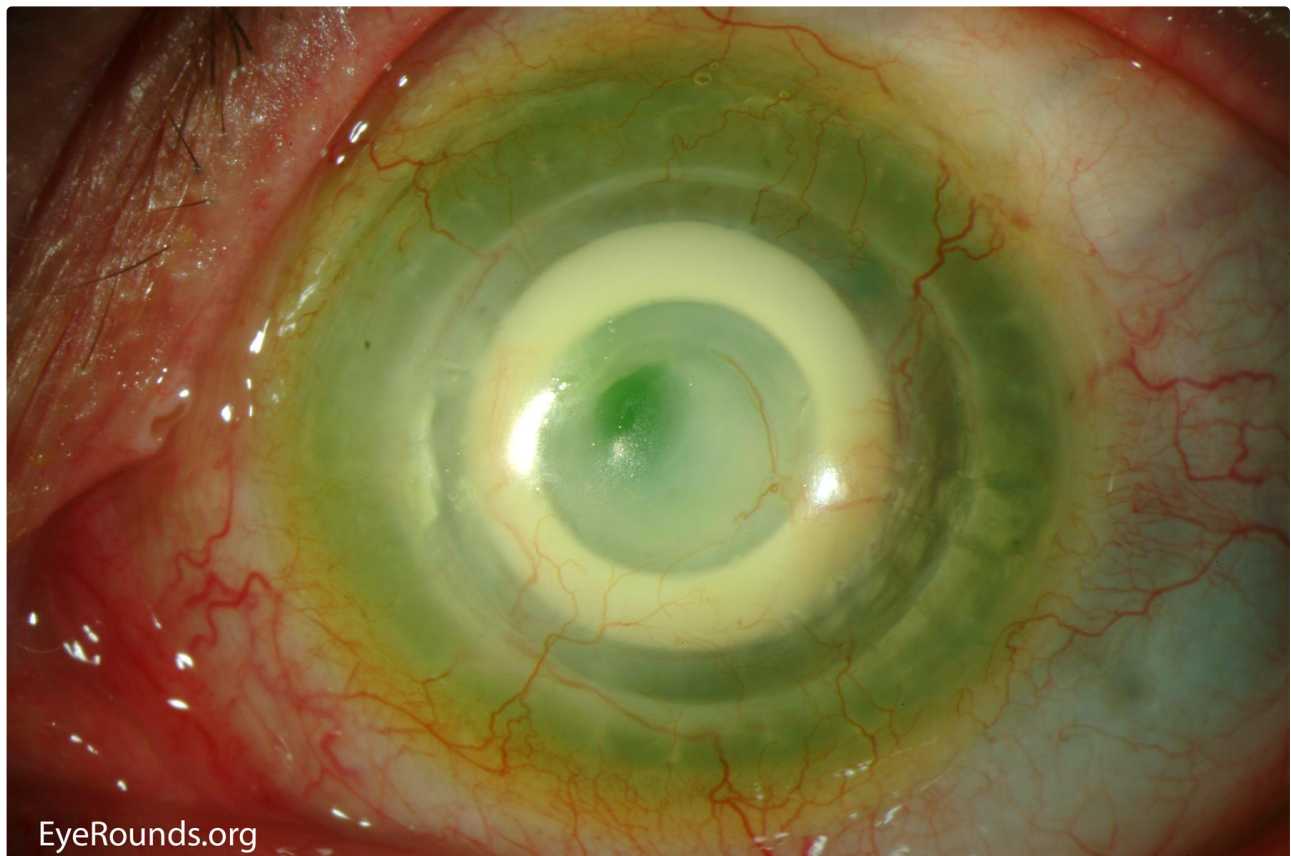
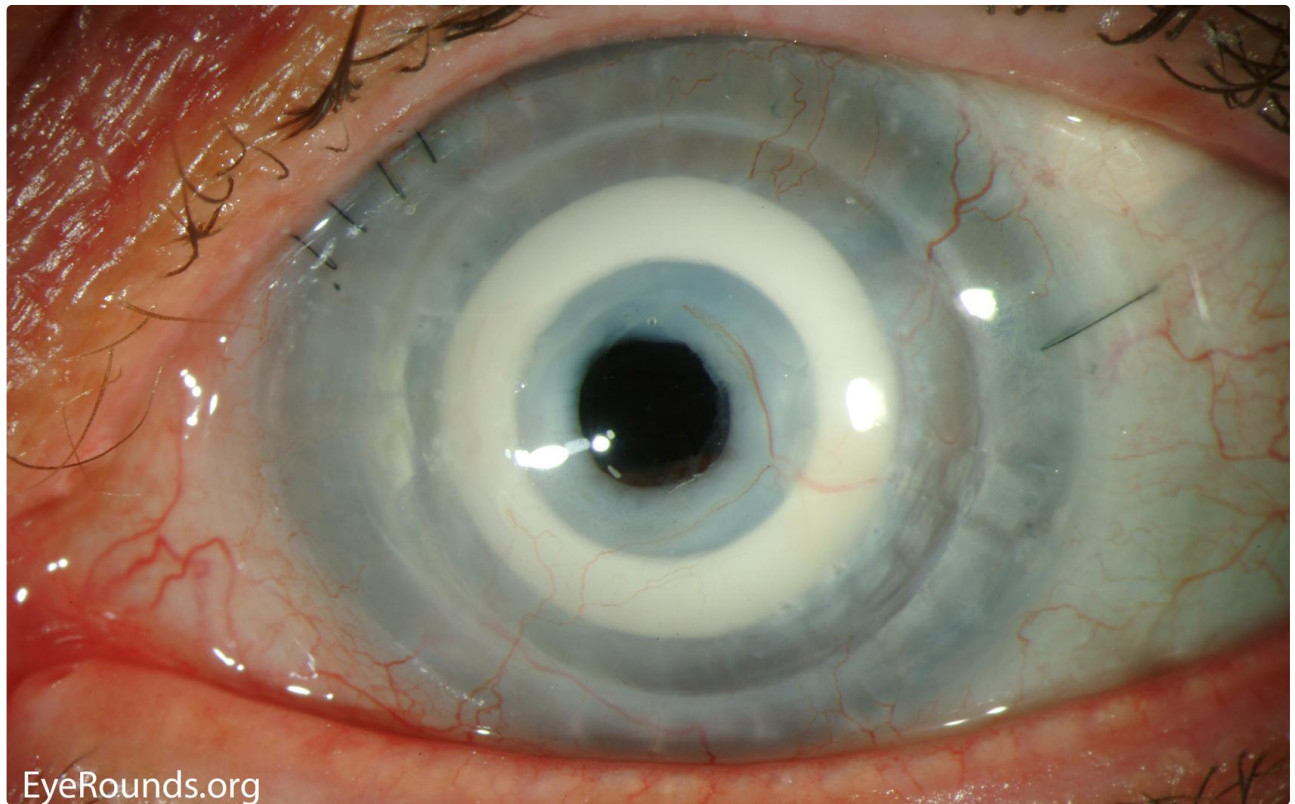


Photo credit: Tracy Aly, CRA

 Enlarge

 Download

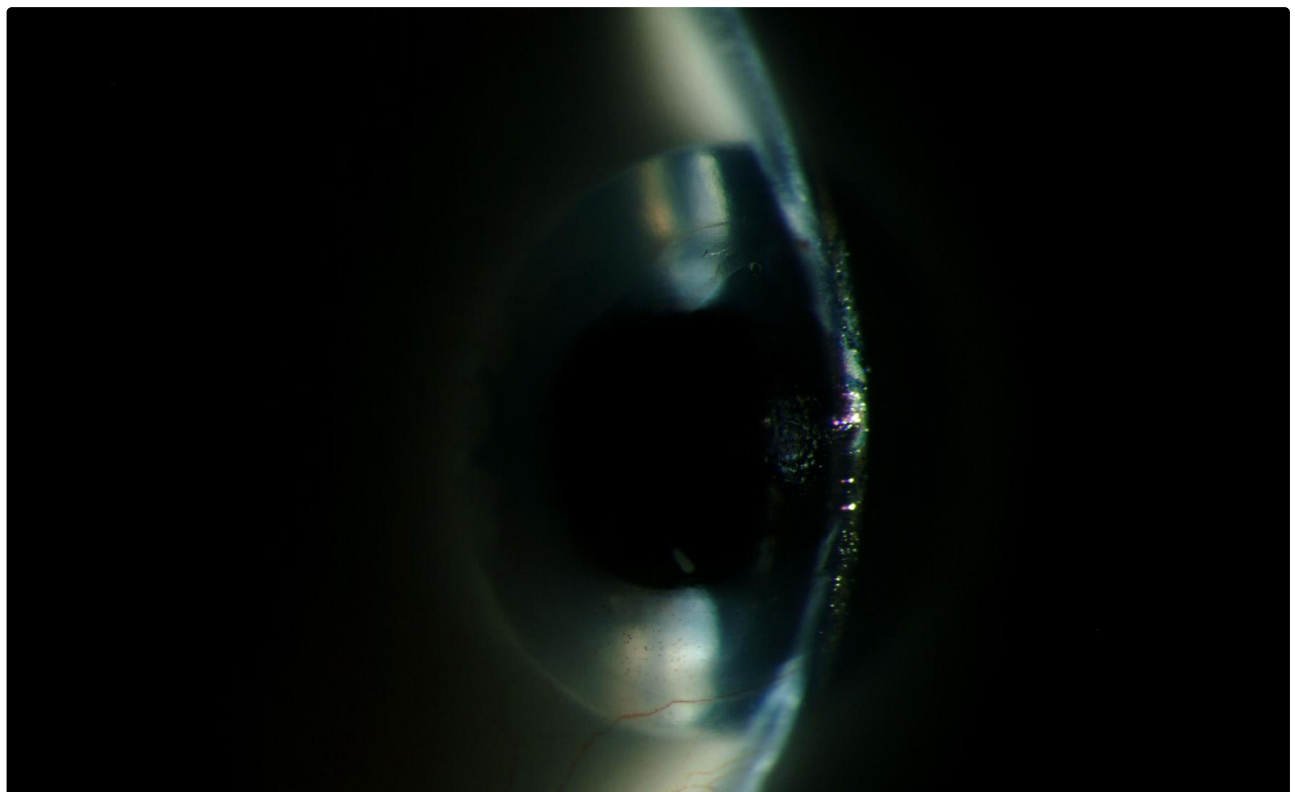


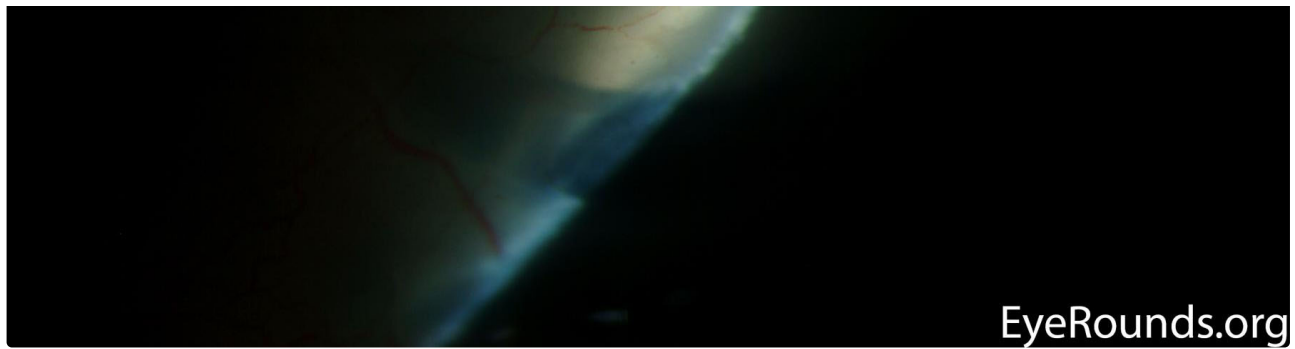
EyeRounds.org

Photo credit: Stephanie Karakas, CRA

[Enlarge](#)

[Download](#)



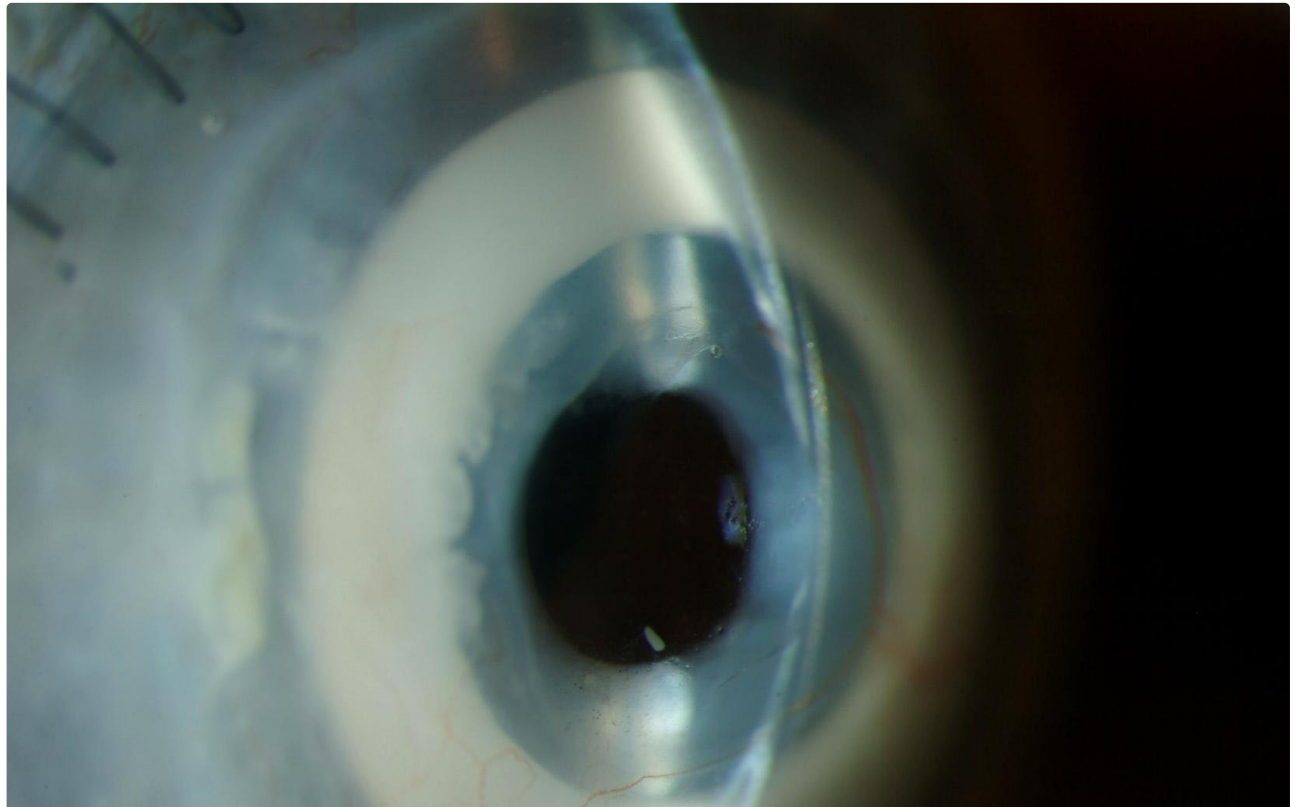


EyeRounds.org

Photo credit: Stephanie Karakas, CRA

 Enlarge

 Download



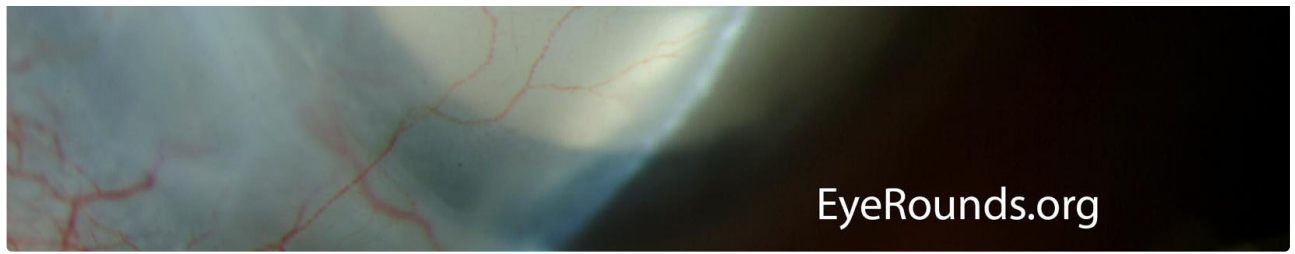


Photo credit: Stephanie Karakas, CRA

[Enlarge](#)
[Download](#)

Image Permissions:



Ophthalmic Atlas Images by [EyeRounds.org](#), [The University of Iowa](#) are licensed under a [Creative Commons Attribution-NonCommercial-NoDerivs 3.0 Unported License](#).

Address

University of Iowa
Roy J. and Lucille A. Carver College
of Medicine
Department of Ophthalmology and
Visual Sciences
200 Hawkins Drive
Iowa City, IA 52242

[Support Us](#)

Legal

Copyright © 2019 The University of
Iowa. All Rights Reserved
[Report an issue with this page](#)
[Web Privacy Policy](#) |
[Nondiscrimination Statement](#)

Related Links

[Cataract Surgery for Greenhorns](#)
[EyeTransillumination](#)
[Gonioscopy.org](#)
[Iowa Glaucoma Curriculum](#)
[Iowa Wet Lab](#)
[Patient Information](#)
[Stone Rounds](#)
[The Best Hits Bookshelf](#)

EyeRounds Social Media

Follow



Receive notification of new cases,
[sign up here](#)
[Contact Us](#)
[Submit a Suggestion](#)